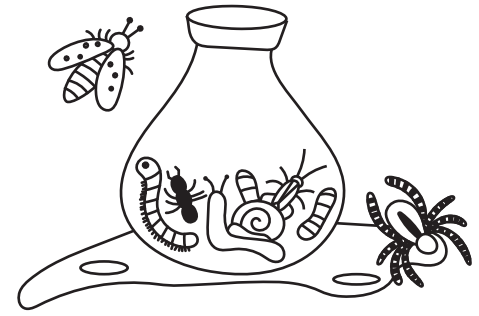


Mystery Jar Labels:

Print on a 8.5" x 11" sticker sheet.
Cut out labels and adhere to your jars.
Empty protein shake tubs/jars work great because they have a wide mouth and are not see through.

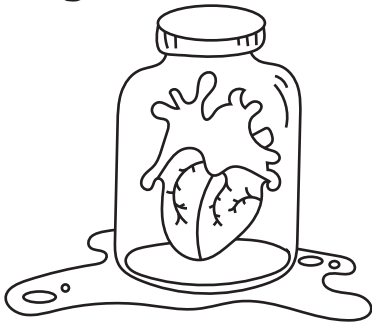
Creepy Crawlies = Live Bugs
Pig's Heart = Tomato without the Skin
Intestines = Worms
Frog Eggs = Water Beads
Brain Matter = Slime

Creepy Crawlies



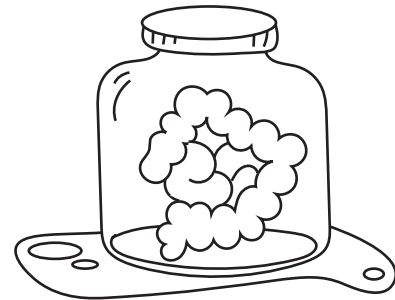
WARNING: Keep lid closed. May escape.

Pig's Heart



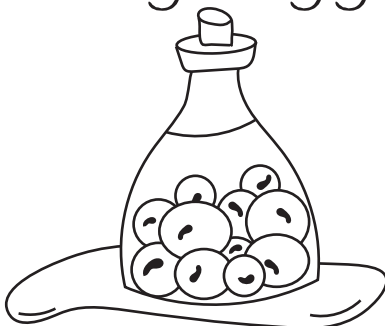
CAUTION: Handle with care. Do not eat.

Intestines



WARNING: Sensitive to the touch.

Frog Eggs



CAUTION: Do not squish.

Brain Matter



CAUTION: Pick up and handle lightly.