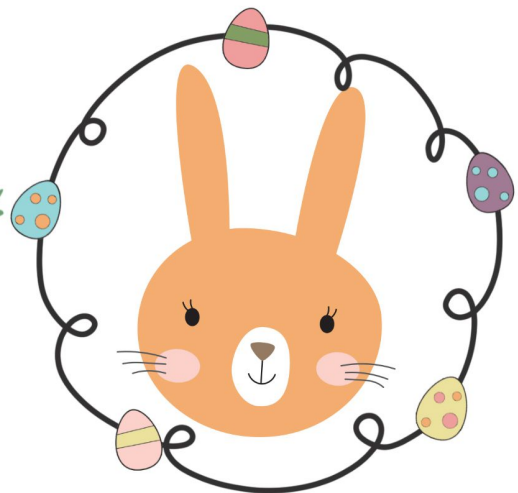
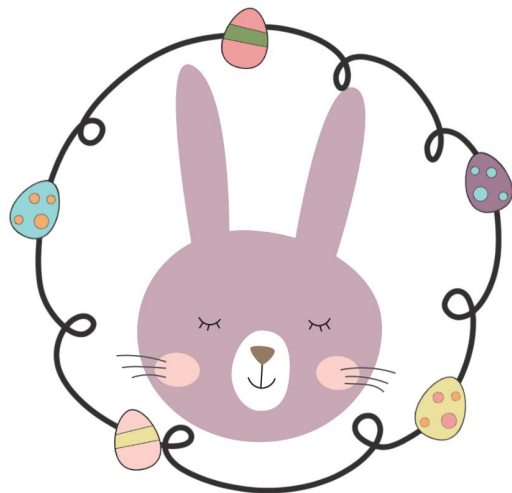
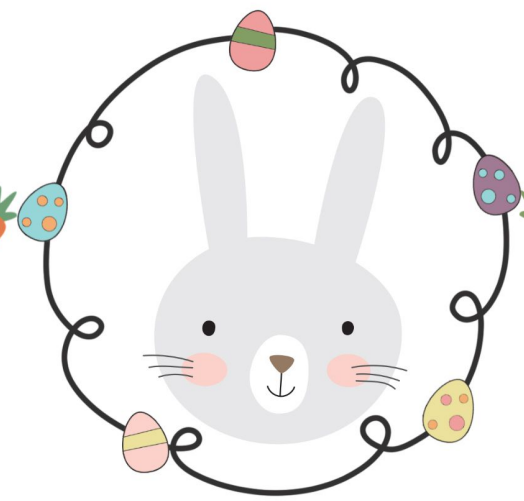
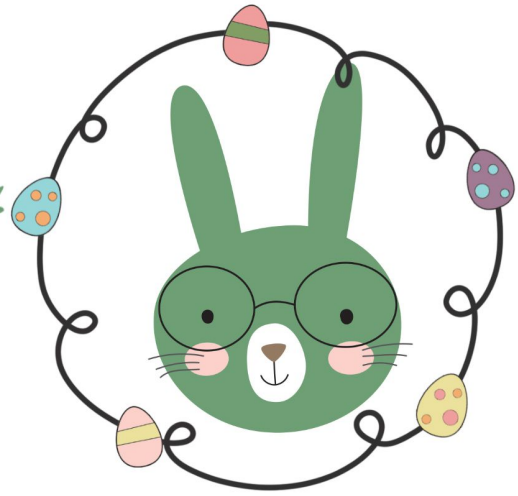
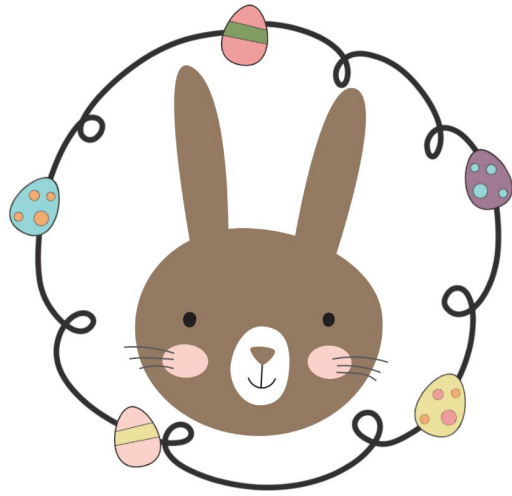
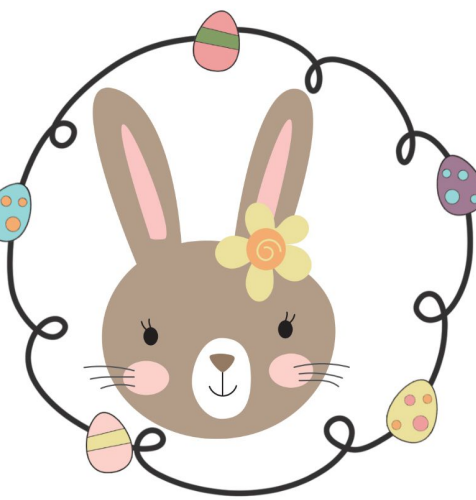
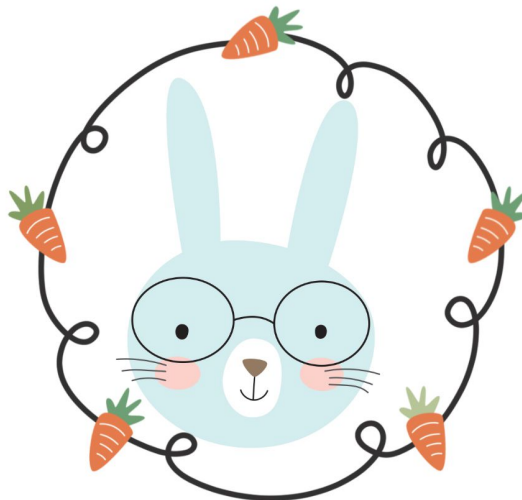
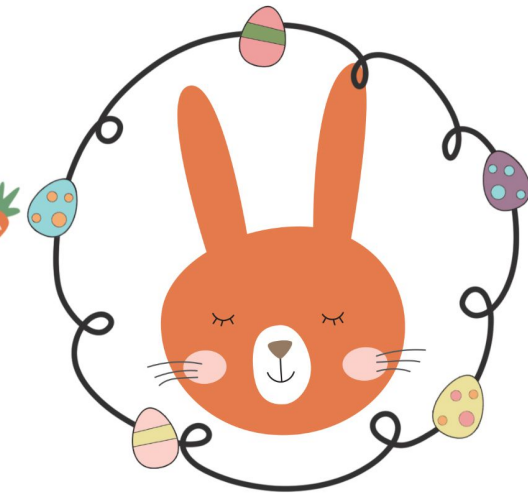
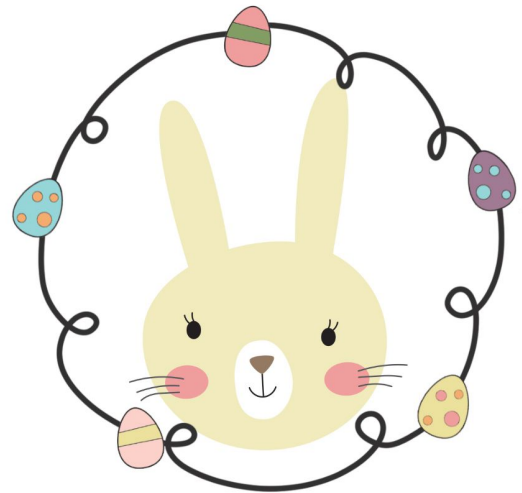
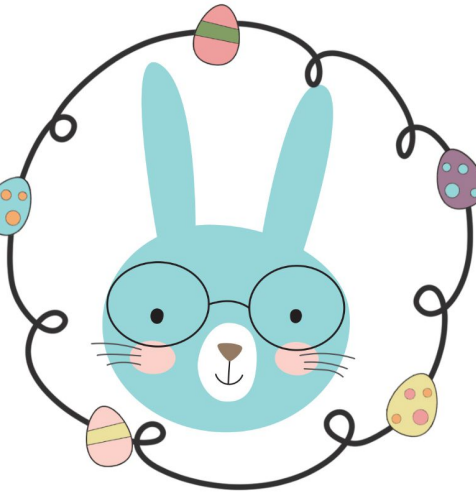




DON'T EAT



fluffy



DON'T EAT FLUFFY GAME:

Goal - Try to get as much candy as possible without picking 'Fluffy.'

Rules - Place a candy on each character. One player leaves the room while the other players pick which bunny is going to be 'Fluffy.' The player comes back in the room and starts picking up one candy at a time. Every one yells "Don't Eat Fluffy!" when the player grabs the candy on the chosen bunny. The turn is over and the player gets to keep all the candy they picked before picking 'Fluffy.' Place new candies on the open spaces and the next player takes their turn; repeat with all players.



Switch it up and replace the candy
with money instead for a more intense game!



Print on cardstock. Tape both pages side by side to make a full board game.